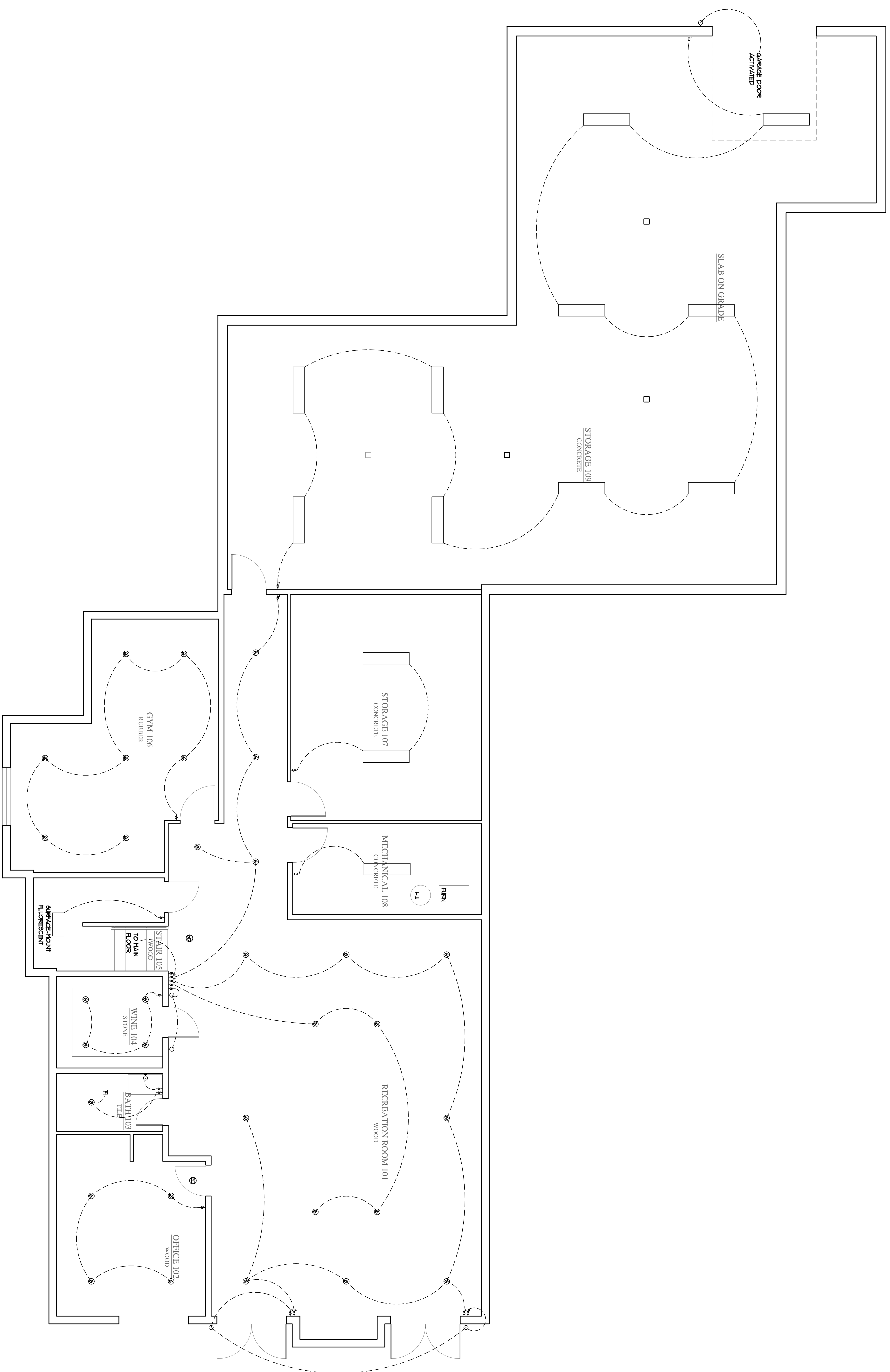


**ELECTRICAL LEGEND**

⊕	FLOOR MOUNT UP LIGHT	Ⓜ	COMPONENT W/ IN. DIMENSION
⊖	6" RECESSED LIGHT	Ⓜ	DUPLEX RECEPT.
⊖	4" RECESSED LIGHT	Ⓜ	481 DUPLEX RECEPT.
⊖	WALL MOUNTED LIGHT	Ⓜ	DUPLEX RECEPT. 1/2 SWITCHED
⊖	SURFACE/PENDANT LIGHT	Ⓜ	FLOOR RECEPT.
⊖	WALLWASH LIGHT	Ⓜ	CELLING/SOFT RECEPT.
⊖	RECESSED SPOT LIGHT	Ⓜ	120V SPECIAL PURPOSE FOURPLEX RECEPT.
⊖	LINEAR STRIP LIGHTING	Ⓜ	220V SPECIAL PURPOSE FOURPLEX RECEPT.
⊖	PICTURE LIGHT	Ⓜ	TELEPHONE
⊖	CLOSET LIGHT	Ⓜ	TELEVISION
⊖	CERAMIC SOCKET	Ⓜ	DOORBELL
⊖	HALOGEN SPOT LIGHT	Ⓜ	SMOKE DETECTOR SWITCH
⊖	HALOGEN FLOOD LIGHT	Ⓜ	3-WAY SWITCH
⊖	ADJUSTABLE FLOODLIGHTS	Ⓜ	4-WAY SWITCH
⊖	TRACK LIGHT	Ⓜ	DIPPING SWITCH
⊖	TRACK LIGHT - 2 CIRCUIT	Ⓜ	DIPPING SWITCH
⊖	FAN/LIGHT COMBO	Ⓜ	LOW VOLTAGE SWITCH
⊖	EXHAUST FAN	Ⓜ	MOTION SENSOR
⊖	FLUORESCENT LIGHT	Ⓜ	PHOTOCELL
⊖	CEILING FAN	Ⓜ	SPEAKER
⊖	CIRCUIT BREAKER PANEL	Ⓜ	TRANSFORMER
⊖	METER	Ⓜ	VOLUME CONTROL
⊖	ELECTRIC RADIANT HEAT	Ⓜ	CAT5 CABLE
⊖	GAS RADIANT HEAT	Ⓜ	
⊖	SMOKE DETECTOR	Ⓜ	

SMOKE DETECTORS SHALL BE HANGING WITH BATTERY BACKUP. OUTLETS ARE 2" FROM SURFLOOR TO TOP OF ROUGH-IN BOX (UNLESS NOTED OTHERWISE). CONTRACTOR TO COORDINATE RELAYING WITH MECHANICAL AND LIGHTING LAYOUT. SEE GENERAL NOTES ON LIGHTING LAYOUT REQUIREMENTS.



169 Lake St. S.  
Suite 200 #1, 98083  
Issaquah, WA  
7 425.658.8889  
7 425.622.1132

**SULLIVAN RESIDENCE**

ISSAQUAH HIGHLANDS  
GRAND RIDGE DRIVE, LOT 5

**LOWER LIGHTING PLAN**

DATE: 01/09/18  
JOB NUMBER: 0650  
DRAWN BY: *mgf*  
FILE: E21.dwg  
SHEET NO: **E2.1**