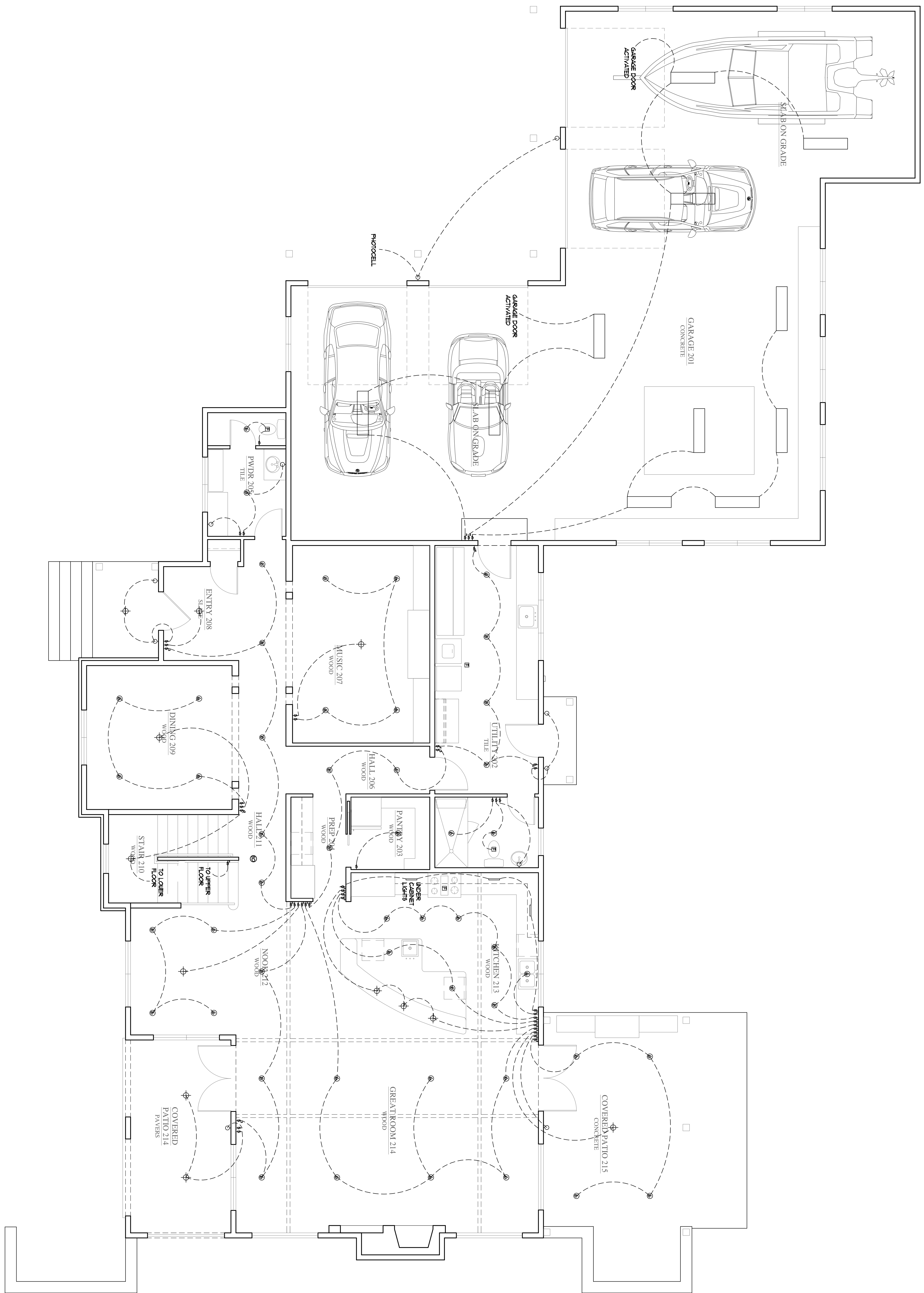


ELECTRICAL LEGEND

⊕	FLOOR MOUNT UPLIGHT	Ⓜ	COMPONENT W/ INT. DIMMER
⊖	6" RECESSED LIGHT	Ⓜ	DUPLEX RECEPT.
⊖	4" RECESSED LIGHT	Ⓜ	481 DUPLEX RECEPT.
⊖	WALL MOUNTED LIGHT	Ⓜ	DUPLEX RECEPT. 1/2 SWITCHED
⊖	SURFACE/PENDANT LIGHT	Ⓜ	FLOOR RECEPT.
⊖	WALLWASH LIGHT	Ⓜ	CELLING/ROOF RECEPT.
⊖	RECESSED SPOTLIGHT	Ⓜ	120V SPECIAL PURPOSE
⊖	LINEAR STRIP LIGHTING	Ⓜ	220V SPECIAL PURPOSE
⊖	PICTURE LIGHT	Ⓜ	FOURPLEX RECEPT.
⊖	CLOSET LIGHT	Ⓜ	TELEPHONE
⊖	CERAMIC SOCKET	Ⓜ	TELEVISION
⊖	HALOGEN SPOT LIGHT	Ⓜ	DOORBELL
⊖	HALOGEN FLOOD LIGHT	Ⓜ	SMOKE DETECTOR SWITCH
⊖	ADJUSTABLE FLOODLIGHTS	Ⓜ	3-WAY SWITCH
⊖	TRACK LIGHT	Ⓜ	4-WAY SWITCH
⊖	TRACK LIGHT - 2 CIRCUIT	Ⓜ	DIMMING SWITCH
⊖	FAN/LIGHT COMBO	Ⓜ	DIMMING SWITCH
⊖	EXHAUST FAN	Ⓜ	LOW VOLTAGE SWITCH
⊖	FLUORESCENT LIGHT	Ⓜ	MOTION SENSOR
⊖	CEILING FAN	Ⓜ	PHOTOCELL
⊖	CIRCUIT BREAKER PANEL	Ⓜ	SPEAKER
⊖	METER	Ⓜ	TRANSFORMER
⊖	ELECTRIC RADIANT HEAT	Ⓜ	VOLUME CONTROL
⊖	GAS RADIANT HEAT	Ⓜ	CAT5 CABLE
⊖	SMOKE DETECTOR		

SMOKE DETECTORS SHALL BE HANGING WITH BATTERY BACKUP. OUTLETS ARE 2" FROM SUBLINE, OR TO TOP OF ROUGH-IN BOX (UNLESS NOTED OTHERWISE). CONTRACTOR TO COORDINATE RELAYING WITH MECHANICAL AND LIGHTING LAYOUT. SEE GENERAL NOTES ON LIGHTING LAYOUT REQUIREMENTS.



NO. DATE REVISION

DATE: 01/09/08
 JOB NUMBER: 0650
 DRAWN BY: *mgf*
 FILE: E2.2.dwg
 SHEET NO: E2.2

169 Lake St. S.
 Suite 207 #1, 98083
 Issaquah, WA
 Phone: 206.885.8889
 Fax: 206.885.8888
 Website: www.curtisgillotte.com

CURTIS GILLOTTE
 ARCHITECTS

SULLIVAN RESIDENCE

ISSAQUAH HIGHLANDS
 GRAND RIDGE DRIVE, LOT 5

MAIN LIGHTING PLAN

CONSTRUCTION SET